

Electric, self contained, tilting twin kettle, 45 litre per side capacity, 2/3 steam jacketed. All exterior surfaces are stainless steel. Simple & reliable solid state controls for accurate temperature control.

### STANDARD FEATURES

- Manual tilting, balanced design
- Space saving design through shared, centre console
- Self-contained
- IPX6 Rated water resistant controls, splash-proof construction
- Large pouring lip for high capacity and chunky products
- 50 psi steam jacket rating for higher cooking temperatures
- Solid state water level control
- Splash proof element cover with a double gasket seal
- Welded-in heating elements
- Steam jacket filled with treated water, venting and/or refilling is not required
- Reinforced rolled rim design prevents damage to kettle rim, eliminates "bar rim designs"
- Easily cleaned: kettle and all exterior surfaces are of type 304 stainless steel with an #4 finish
- Operating temperature range from 63°C - 127°C
- Rear mounted easy access pressure gauge and pressure relief valve to prevent tampering.
- Self locking marine type tilting mechanism prevents accidental spills. Balanced design makes it easy to tilt
- 316 Stainless Steel Kettle Liner for high acid products (316-G)

### ACCESSORIES

- Stainless Steel Equipment Stand with Drain Drawer 450mm height. (ST55)
- Optional Splash Guard for equipment stand (2x SG-28 for TKET-12-T)
- Common Hot and Cold Water Faucet with Swing Spout. (DPK19)
- Kettle Markings (KML x2 - factory fitted)
- Food Strainers (FS12 x2)
- Cooking Baskets (BS12 x2)
- Measuring Strips (MS12 x2)
- Lift Off Covers (CLI2 x2)

### TECHNICAL DATA

Power Supply: 3NAC 415V 50Hz, 33.4 amp  
(Cable & Plug not included)

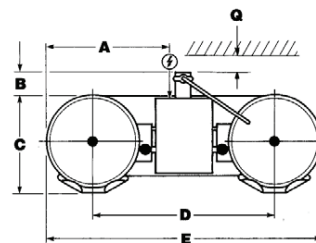
Total Output: 24kW

Capacities (per kettle):  
(in 115 gram servings, other sizes may be calculated)  
12 gallons / 45 litres - 352 servings

### SHIPPING DATA

Shipping Weight: 137 kg  
Shipping Dimensions: 711W x 1372D x 991H mm

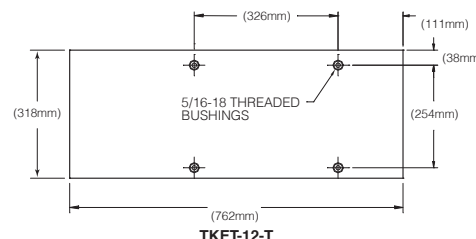
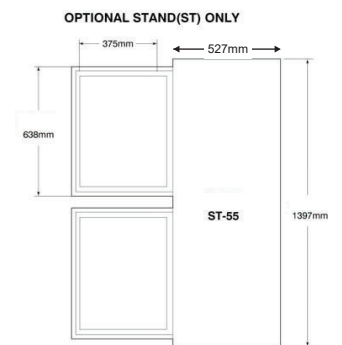
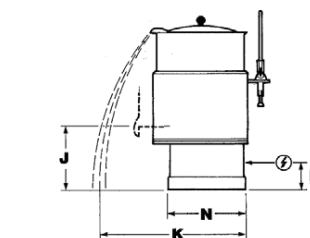
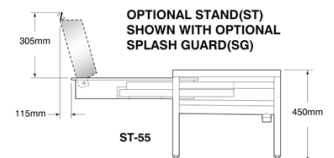
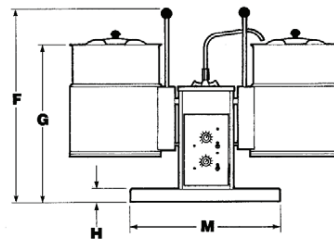
SPECIFICATIONS ARE SUBJECT TO CHANGE WITHOUT NOTICE.



**WATER**

3/8" O.D. copper tube or  
1/2" N.P.T. pipe.

When ordered with  
optional faucet.



**CLEARANCE**

RIGHT = 0"  
LEFT = 0"  
REAR = See "Q" on  
chart above.

### DIMENSIONS (mm)

Lt.	A	B	C	D	E	F	G	H	J	K	L	M	N	Q
45	615	110	495	840	1285	800	615	38	160	685	375	762	320	140