

Electric solid top hotplate with 4 independent plates, constructed in AISI 304 stainless steel. Recessed perimeter to contain spills. Hotplate in carbon steel plate with smooth chromed surface. Radiused corners and rounded top edge. Hotplate not built-in but removable. Hotplate surface 720x720x30h mm from top. 4 independent hotplates with 4 kW output.

Thermostat control providing surface temperature adjustment from 50 to 400 °C. Automatic reset safety thermostat which shuts off heating in the event the appliance is switched on with an unsuitable pan or no pan at all. Indicator leds for verifying correct appliance operation.

GN 2/1 conventional electric oven. Oven heated by independently controlled top and bottom heating elements. Thermostat control providing temperature adjustment from 100°C to 330°C. 4-position selector switch, safety thermostat. Cooking chamber dimensions, 535x650x300h mm. Oven power: 6 kW. Indicator leds for verifying correct appliance operation. Height-adjustable feet in stainless steel. IPX5 protection rating.

#### STANDARD FEATURES

- 2 mm thick pressed stainless tops
- IPX5 water protection
- Modular design
- Interlocking device supplied with all units
- Space at rear for connections

#### OPTIONAL FEATURES

- Castor kit



#### LEGEND

- E = Socket
- S = Draining

#### DIMENSIONS

900D x 800W x 870H mm

Weight: 178kg

Oven Dimensions: 575D x 700W x 300H mm

Plate Dimensions: 720 x 720 x 30

#### TECHNICAL DATA

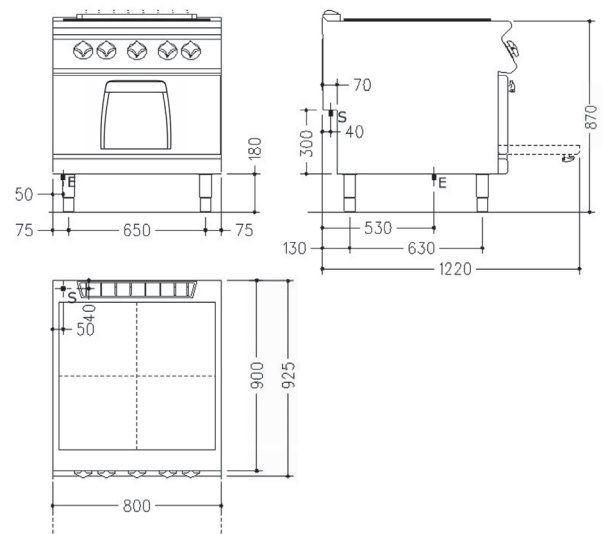
Power Supply: 400V 3NAC 50Hz (Lead & Plug not included)

Total Output: 22kW

#### SHIPPING DATA

Shipping Weight: 188kg

Shipping Dimensions: 1020D x 840W x 1050H mm



SPECIFICATIONS ARE SUBJECT TO CHANGE WITHOUT NOTICE.