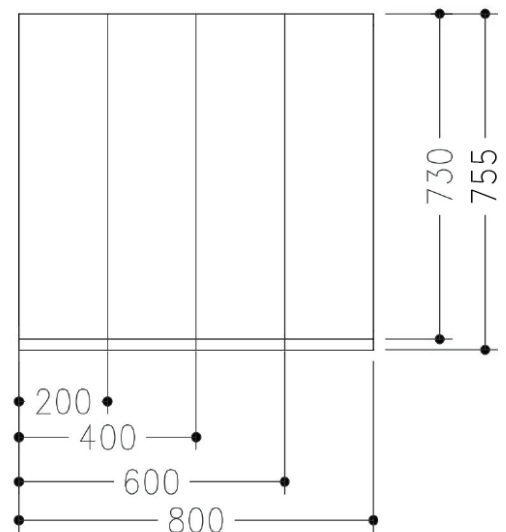
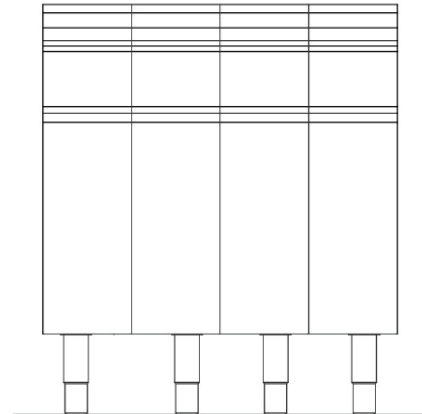
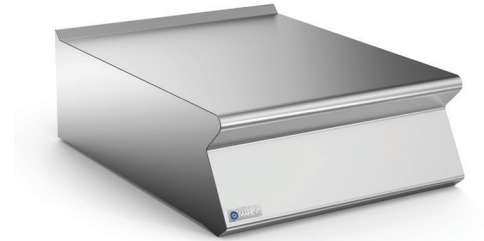


Neutral top unit with drawer, constructed in AISI 304 stainless steel, 1.5 mm thick top. Worktop without flue apertures.

Designed for insertion of water column accessory. Fully sealed underside. Full width integral front panel formed handles.

Drawer designed to accommodate Gastro Norm containers of maximum height h=150 mm. Drawer with radiused internal corners.



DIMENSIONS

730D x 600W x 250H mm

Weight: 28kg

SHIPPING DATA

840D x 640W x 550H mm

Shipping Weight: 35kg

SPECIFICATIONS ARE SUBJECT TO CHANGE WITHOUT NOTICE.