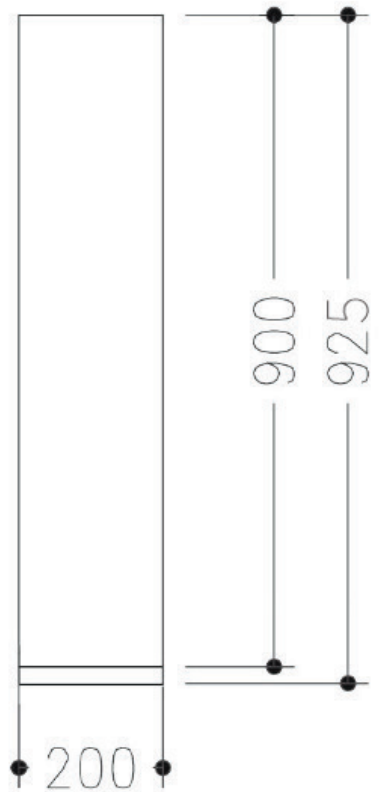
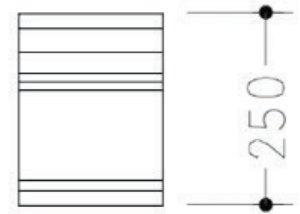
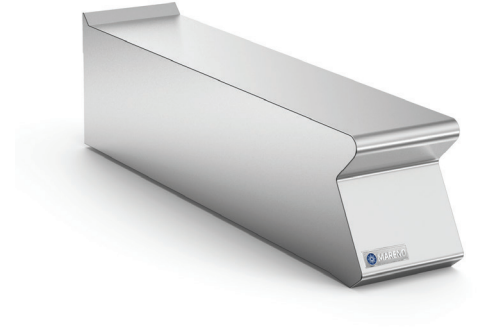


Neutral top unit without drawer, constructed in AISI 304 stainless steel, 2 mm thick top. Worktop without flue apertures. Designed for insertion of water column accessory. Fully sealed underside.



DIMENSIONS

900D x 200W x 250H mm

Weight: 20kg

SHIPPING DATA

950D x 440W x 550H mm

Shipping Weight: 25kg

SPECIFICATIONS ARE SUBJECT TO CHANGE WITHOUT NOTICE.