

GARLAND MST44-R

MASTER SERIES COMBINATION TOP RANGE

Heavy-duty gas range with oven, Model MST44R. 4 x 36.5mj, two-piece Starfire burners. Sentry total flame failure protection for all burners. Heavy-duty cast iron top grates and ring grates. 864mm wide x 965mm deep, including 191mm deep stainless steel front rail. Porcelain enamel oven interior with 42mj cast iron oven burner. Stainless steel front with black powder coat epoxy sides. 168.6mj. Natural or propane gas available.

Also available:

MST44-S: storage base with doors.

MST44-T: modular top.



MST44R model displayed

STANDARD FEATURES

- Stainless steel front; black powder coat epoxy sides
- 191mm stainless steel front rail
- Cast iron top grates
- Piezo spark ignition for oven
- Storage base interior of aluminized steel
- 4 x two -piece Starfire burners with removable heads

OPTIONAL FEATURES

- Stainless steel left, right or both sides
- Stainless steel oven interior
- Additional oven rack
- Rear gas connection; 3/4", 1", or 1-1/4" NPT
- 4 swivel casters w/front brakes
- 4 Polyurethane non-marking swivel casters w/front brakes
- Gas flex hose & quick disconnect (3/4", 1" or 1-1/4" NPT x 5') w/restraining device, please specify
- Stainless steel common front rail up to 1728mm wide (two or more units in a battery)
- Electric Spark ignition on all pilots Suffix -E models
- 152mm chrome steel adj. legs
- Removable ring grate bowl over each burner
- One-piece Stainless Steel drip tray
- Fully porcelainized oven interior
- Sentry total flame failure protection for all burners
- Stainless steel main back
- Convection oven base, add C to Model No., e.g. MST44RC
- Gas shut off valve; 3/4", 1" or 1-1/4" NPT
- End caps and cover, NC, specify
- 152mm stainless steel adj. legs
- Storage base shelf of aluminized or stainless steel

SPECIFICATIONS ARE SUBJECT TO CHANGE WITHOUT NOTICE.

From the world of Comcater!

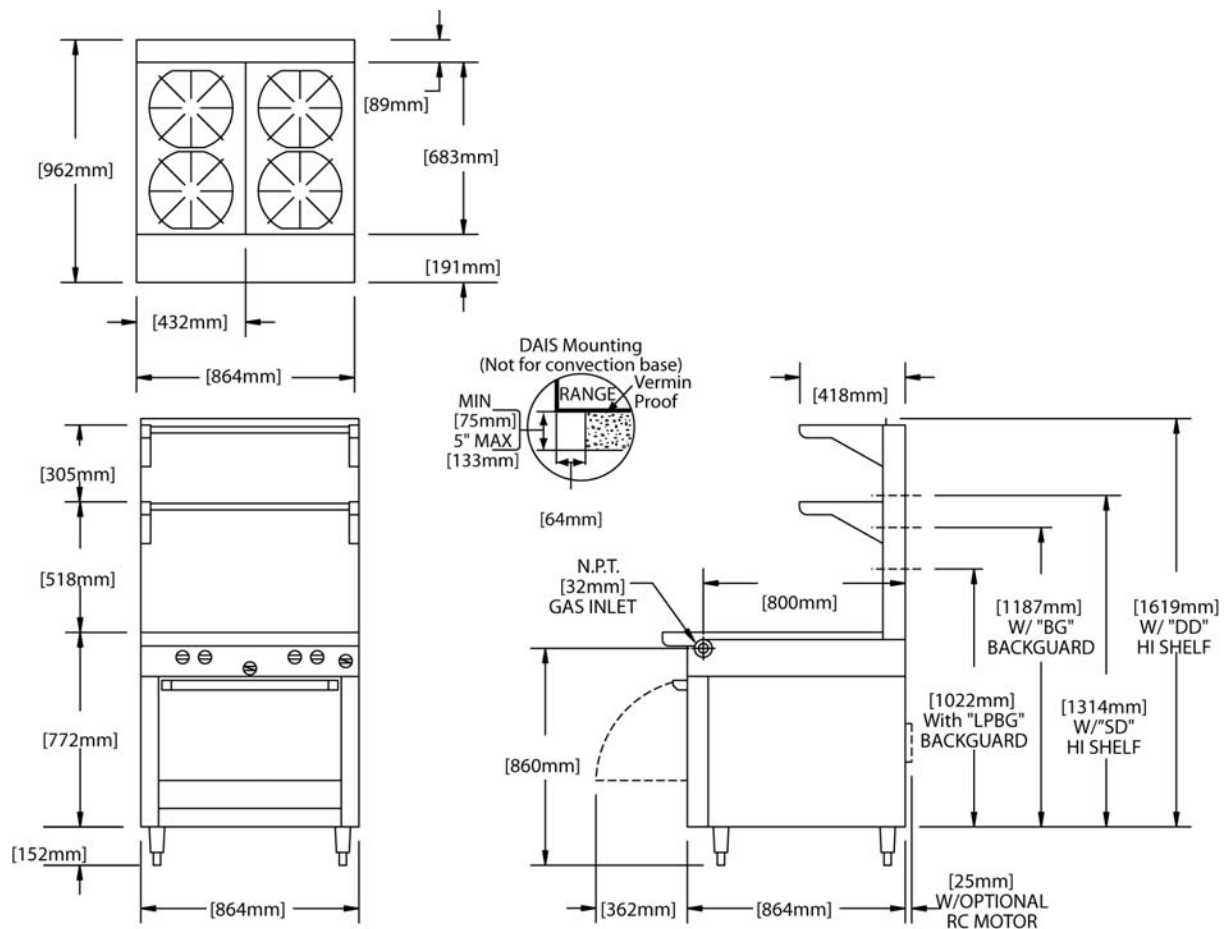
National Head Office
156 Swann Drive
Derrimut VIC 3030
Tel: +61 3 8369 4600
Fax: +61 3 8369 4695

Melbourne
96-100 Tope Street,
South Melbourne VIC 3205
Tel: +61 3 8369 4600
Fax: +61 2 8699 1299

Sydney
20/4 Avenue of the Americas
Newington, NSW 2127
Tel: +61 2 9748 3000
Fax: +61 2 9 648 4762

Brisbane
1/62 Borthwick Avenue
Murarrie QLD 4172
Tel: +61 7 3399 3122
Fax: +61 7 3399 5311

GARLAND MST44-R



DIMENSIONS

External Dimension: 864W x 965D x 924 mm

Oven Interior: 667W x 737D x 343H mm

TECHNICAL DATA

Gas Type Natural or LP

Total Energy Rating 188mj

Burner Ratings (Natural) 36.5mj (Open Burner)
42mj (Oven)

AGA Approval Number SC380

SPECIFICATIONS ARE SUBJECT TO CHANGE WITHOUT NOTICE.