

Lever tilt, electric, self contained single kettle with 80lt capacity, 2/3 steam jacketed. Solid state controls for accurate temperature control ( $\pm 1^{\circ}\text{C}$ ) and low water safety. All exterior surfaces are stainless steel.

#### STANDARD FEATURES

- Manual tilting, balanced design
- Water resistant controls, splash-proof construction
- Welded-in heating elements
- 50 psi steam jacket rating for higher cooking temperatures
- Solid state water level control
- Splash proof element cover with a double gasket seal
- 152mm level adjustable feet
- Large pouring lip for high capacity and chunky products
- Steam jacket filled with treated water, venting and/or refilling is not required
- Accurate, constant solid state temperature controls (mechanical thermostat not as accurate) - less than  $\pm 1^{\circ}\text{C}$  variance (ideal for simmering). Operating temperature range from  $63^{\circ}\text{C}$  -  $127^{\circ}\text{C}$
- Re-inforced rolled rim design prevents damage to kettle rim
- Easily cleaned: kettle and all exterior surfaces are of type 304 stainless steel with an #4 finish
- Rear mounted easy access pressure gauge and pressure relief valve to prevent tampering.

#### OPTIONAL FEATURES

- Lift-off Cover (CL20)
- Measuring Strip (MS)
- Kettle Markings (KM)
- Food Strainer (FS)
- Basket Strainer (BS-)
- Protective Control Panel (PCE)
- Double pantry faucet with swing spout and mounting bracket (DPK2)
- Type 316 Stainless Steel Kettle interior for high acid food products (316)
- Kettle Accessory Kit (KAK)
  - Clean-up Brush (CB) - 36" Kettle Paddle (KP)
  - 36" Kettle Whip (KW) - 36" Kettle Brush (KB)
  - Draw-off Brush (DB) - 24 oz. Ladle (KL)
- Sliding Drain Drawer (-SLD)

#### TECHNICAL DATA

Power Supply: 3NAC 415V 50Hz, 20.9 amp  
(Cable & Plug not included)

Total Output: 15 kW

Capacities (per kettle):  
(in 115 gram servings, other sizes may be calculated)  
20 gallons / 80 litres - 704 servings

#### SHIPPING DATA

Shipping Weight: 123kg

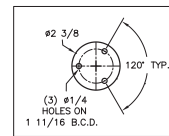
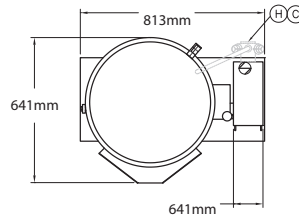
Shipping Dimensions: 965W x 965D x 1371H mm

SPECIFICATIONS ARE SUBJECT TO CHANGE WITHOUT NOTICE.

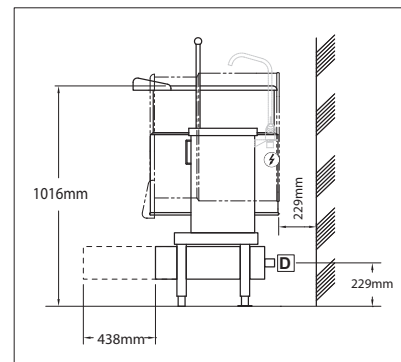
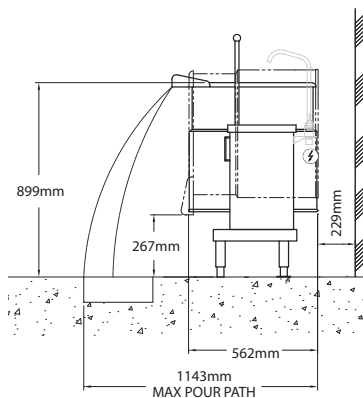
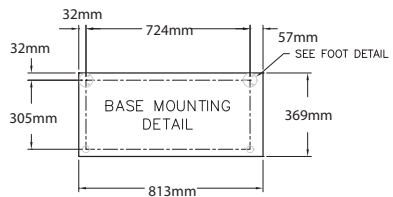
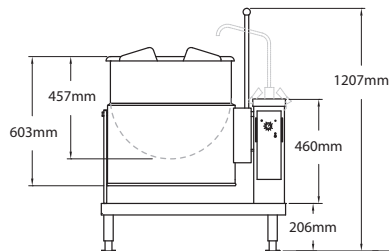
#### CODING GUIDE FOR OPTIONS

OPT1 316 Liner only

\*add OPT suffix to product code.



FOOT DETAIL



DIMENSIONS FOR UNITS WITH  
OPTIONAL SLIDING DRAIN DRAWER

#### DRAIN

1 1/2" N.P.T. pipe (for optional sliding drain drawer).

#### WATER

3/8" O.D. copper tube or 1/2" N.P.T. pipe.

When ordered with optional faucet.

#### CLEARANCE

RIGHT = 0", LEFT = 0"  
REAR = 6" (152mm)